



Flowfast DQ (120 mils)

A slip resistant, decorative and fast cure MMA flooring system for use on pool decks and surrounds.



Fast Cure:

Accelerates cure time, providing a fully operational surface in just 60 minutes.



Slip Resistant:

Adjustable, positively textured profile to minimize pool side slip risks.



Chemical Resistant:

Protects against acids, alkalis, salt solutions, chlorine and sanitizers.



Decorative:

Available in vibrant quartz color mixes that can be matched to neighboring finishes.



UV Resistant:

Exhibits excellent UV color stability over time and will not become brittle with age.

Standard Colors:



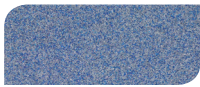
Spring Glen



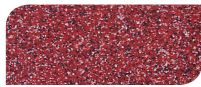
Gray Mist



Rococo



Blueberry Ice



Kitchen Red

SLIP RESISTANCE:

BS 7976-2

Dry: 80
Wet: 60

IMPACT RESISTANCE:

ISO 6272

2.2 lb weight > 70 in
4.4 lb weight > 59 in

COMPRESSIVE STRENGTH:

ASTM C 579

11,600 psi

BOND STRENGTH:

Greater than cohesive strength of 3,000 psi concrete,
> 220 psi

TENSILE STRENGTH:

ASTM C 307

2,900 psi

FLEXURAL STRENGTH:

ASTM C 580

4,350 psi

ABRASION RESISTANCE:

ASTM D 4060
CS 17 Wheel, 1000 cycles

0.080g loss

TEMPERATURE RESISTANCE:

Continuous Exposure:

Up to 160°F

VOC:

<50 g/l

COEFFICIENT OF FRICTION:

ASTM D 2047

Exceeds ADA
recommendations

SPEED OF CURE:

32°F

70°F

90°F

Light Traffic

60 mins

45 mins

45 mins

Full Traffic

90 mins

60 mins

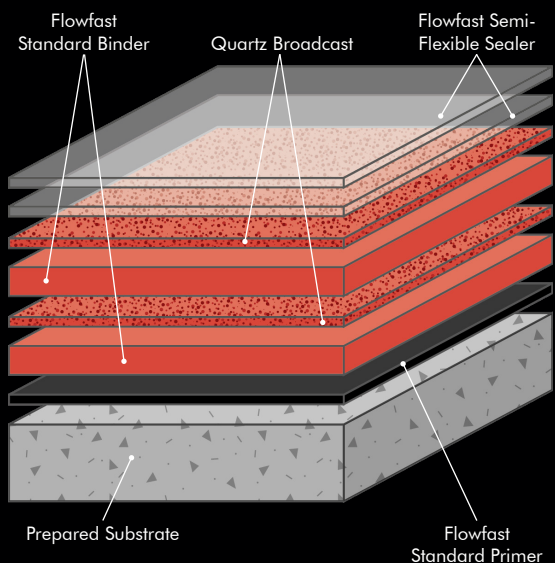
60 mins

Full Chemical Cure

120 mins

90 mins

90 mins



The applied colors may differ from the examples shown.
For a full color chart and samples, contact your local Flowcrete office.

Products Included In This System

Primer:	Flowfast Standard Primer at 80-130 sq ft/gal
1st Binder:	Flowfast Standard Binder at 100 sq ft/gal
Broadcast:	Color Quartz at 0.5 lbs/sq ft
2nd Binder:	Flowfast Standard Binder at 80 sq ft/gal
Broadcast:	Color Quartz at 0.5 lbs/sq ft
1st Sealer:	Flowfast Semi-Flexible Sealer at 100 sq ft/gal
2nd Sealer:	Flowfast Semi-Flexible Sealer at 125 sq ft/gal

Additional primer and membrane options are available for damp surfaces, crack bridging and high movement.

Installation

Installation should be carried out by a Flowcrete STAR or preferred contractor with a documented quality assurance note. Obtain details of our preferred contractor network from our customer service team or by enquiring through our website. Detailed application instructions are also available upon request.

Substrate Requirements

Concrete or screed substrate should have a minimum of 3,000 psi compressive strength, free from laitance, dust and other contamination. The substrate should be dry to ASTM requirements and free from excessive moisture vapor transmission.

Primer

Under certain conditions the porosity of the substrate can lead to soak in of the Flowfast Primer. Excessive soak in will result in uncured primer and will affect the curing of all subsequent layers. In cases where excessive soak in is experienced, the substrate must be reprimed.

Installation Odor:

MMA flooring does exhibit a distinct odor in its wet state but is non-toxic and extremely low in VOCs. During installation this odor can be completely eliminated with the right ventilation program in place. Once cured the odor dissipates rapidly.

Technical Profile

The figures and test results shown overleaf are typical properties achieved in laboratory tests at 75°F and at 50% Relative Humidity.

Environmental Health & Safety

The finished system is assessed as non-hazardous to health and the environment. The long service life and seamless surface reduce the need for repairs and maintenance. Environmental and health considerations are controlled during manufacture and application of the products by Flowcrete Americas' staff and fully trained application teams.

Aftercare, Cleaning & Maintenance

Clean regularly using a single or double headed rotary scrubber drier in conjunction with a mildly alkaline detergent.

Warranty

Flowcrete Americas' products are guaranteed against defective materials and manufacture and are sold subject to our standard 'Warranty, Terms and Conditions of Sale', copies of which can be obtained on request. Warranty does not cover suitability, fit for purpose or any consequential or related damages. Please review warranty in detail before installing the products.

Disclaimer

Any recommendation or suggestion relating to the use of products manufactured by Flowcrete Americas, whether in its technical literature or in response to a specific inquiry, is based upon data believed to be reliable, however the products and information are intended for use by applicators having requisite skill and know-how in the industry and therefore it is for the applicator to satisfy itself of the suitability of the products for its own particular use and it shall be deemed that the applicator has done so at its sole discretion and risk.

[04/16/18]