



## Flowfresh SL (1/8" - 3/16")

A slurry-broadcast, cost effective and HACCP International certified antimicrobial treated cementitious urethane floor system.



### Polygiene®:

Contains a silver ion antimicrobial additive to protect the surface.



### Decorative:

Available in a wide-range of decorative patterns and finishes.



### Lifecycle Cost Efficiencies:

Offers significant lifecycle cost savings compared to tile or acid brick.



### MVT Resistant:

Resistant to 12 lbs of moisture vapor (12 lbs / 1,000 sq ft / 24 hrs).



### Low Odor:

Low odor installation, non-toxic, and phthalate-free formulation.

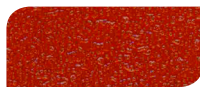
## Standard Colors:



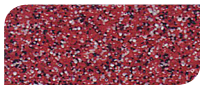
Mid Gray



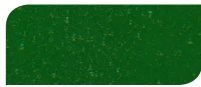
Gray Mist



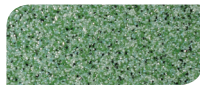
Red



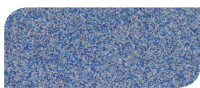
Kitchen Red



Green



Spring Glen



Blueberry Ice

The applied colors may differ from the examples shown.  
For a full color chart and samples, contact your local Flowcrete office.

### COVERAGE RATES: (61 LB UNIT)

94 sq ft/unit at 3/32" (yielding 1/8" finished floor)  
63 sq ft/unit at 1/8" (yielding 3/16" finished floor)

### COMPRESSIVE STRENGTH:

ASTM C 579 >7,250 psi

### TENSILE STRENGTH:

ASTM C 307 1,740 psi

### COEFFICIENT OF THERMAL EXPANSION:

ASTM C 531  $2.7 \times 10^{-5}$  in/in/°F

### FLEXURAL STRENGTH:

ASTM C 580 2,900 psi

### ABRASION RESISTANCE:

ASTM D 4060  
CS 17 Wheel, 1000 cycles 0.05g loss

### ADHESION:

ASTM D 4541 400 psi  
(100% concrete failure)

### COEFFICIENT OF FRICTION:

ASTM D 2047 Exceeds ADA  
recommendations

### TEMPERATURE RESISTANCE:\*

Continuous Exposure: 180°F

Intermittent Spills: 220°F

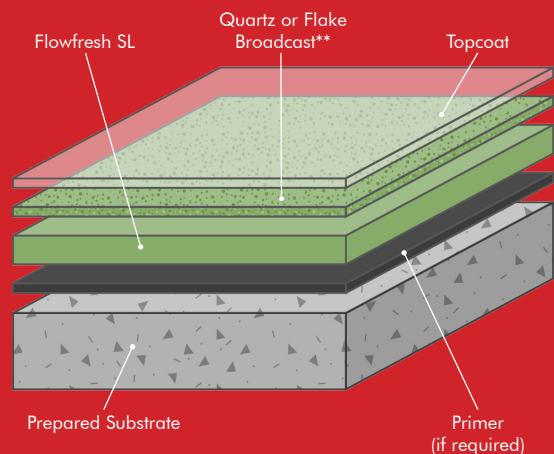
VOC: 9 g/l

SPEED OF CURE: 50°F 70°F 90°F

Light Traffic 12-14 hrs 6-8 hrs 3-5 hrs

Full Traffic 24-36 hrs 12-16 hrs 8-10 hrs

Full Chemical Cure 5-7 days 3-5 days 1-2 days



\*Temperature resistance values shown when using Flowfresh FC as the topcoat.  
\*\*Light colored quartz may require an additional broadcast. Consult your sales representative.

## Products Included In This System

**Unit:** 61 lb (including color pack)  
**Primer:** Flowprime at 200 sq ft/gal or  
(if required) Flowfresh FC at 150 - 200 sq ft/unit  
**Topping:**  
Flowfresh SL  
94 sq ft/unit at 3/32" (yielding 1/8" finished floor)  
63 sq ft/unit at 1/8" (yielding 3/16" finished floor)  
**Broadcast\*:** Quartz/Colored Quartz at 1 lb/sq ft

### Topcoat Options:

Flowfresh FC at 120 sq ft/unit  
Flowfresh FCUV at 230 sq ft/unit  
Flowfresh SR Sealer at 120 sq ft/unit  
Flowcoat CR at 80 sq ft/gal  
Flowfast Standard Sealer at 80 sq ft/gal  
Peran STC at 80 sq ft/gal  
Flowseal Ultra EWT at 80 sq ft/gal

### \*Flake Broadcast:

An alternative effect can be created by replacing the quartz broadcast with Decorative Flakes at 0.5 lb/sq ft.

## Substrate Requirements

Concrete or screed substrate should have a minimum of 3,000 psi compressive strength, free from laitance, dust and other contamination. The substrate should be dry to ASTM requirements and free from excessive moisture vapor transmission.

## Primer

Under certain conditions, out-gassing of the concrete may cause surface defects in the finished Flowfresh topping and priming of the concrete surface may be required. Install a test patch in the area of concrete to determine if priming is necessary.

## Polygiene®

All Flowfresh systems include a built in high performance antimicrobial, Polygiene®. This silver-ion based additive inhibits the growth of bacteria and molds and guards against surface degradation and odors caused by these microorganisms. Detailed antimicrobial information and test results are available upon request.

## Color Stability

Flowfresh is not color fast and may change color over time (exhibits a yellowing effect). Color change depends on the UV light and heat levels present as such the rate of change cannot be predicted. This is more noticeable in light colors and grays, but does not compromise the product's chemical resistance or physical characteristics. Special customized colors and designs can be produced to special order.

## Technical Profile

The figures and test results shown overleaf are typical properties achieved in laboratory tests at 75°F and at 50% Relative Humidity.

## Installation

Installation should be carried out by a Flowcrete STAR or preferred contractor with a documented quality assurance note. Obtain details of our preferred contractor network from our customer service team or by enquiring through our website. Detailed application instructions are also available upon request.

## Environmental Health & Safety

The finished system is assessed as non-hazardous to health and the environment. Flowfresh systems are USDA/FDA compliant & HACCP International certified. The long service life and seamless surface reduce the need for repairs and maintenance. Environmental and health considerations are controlled during manufacture and application of the products by Flowcrete Americas' staff and fully trained application teams.

## Aftercare, Cleaning & Maintenance

After the Flowfresh floor has been put into service, normal plant cleaning procedures may be employed. There are no effective restrictions on the method of cleaning employed. The method of cleaning should match the soil conditions and degree of sanitation required. Flowfresh flooring materials will withstand the daily use of harsh rigorous cleaning with disinfectants and detergents. Certain Flowfresh products will withstand routine cleaning by hot water wash downs up to 250°F and direct application of water-steam mix. Consult a technical representative for advice.

## Warranty

Flowcrete Americas' products are guaranteed against defective materials and manufacture and are sold subject to our standard 'Warranty, Terms and Conditions of Sale', copies of which can be obtained on request. Warranty does not cover suitability, fit for purpose or any consequential or related damages. Please review warranty in detail before installing the products.

## Disclaimer

Any recommendation or suggestion relating to the use of products manufactured by Flowcrete Americas, whether in its technical literature or in response to a specific inquiry, is based upon data believed to be reliable, however the products and information are intended for use by applicators having requisite skill and know-how in the industry and therefore it is for the applicator to satisfy itself of the suitability of the products for its own particular use and it shall be deemed that the applicator has done so at its sole discretion and risk.

[09/26/16]

Flowcrete Americas  
616 Spring Hill Drive Suite 100  
Spring TX 77386 USA  
Tel: +1 936 539 6700 Fax: +1 936 539 6701  
Email: americas@flowcrete.com



[www.flowcreteamericas.com](http://www.flowcreteamericas.com)