



## Flowfresh TZ (1/4")

A trowel-applied, granite filled and HACCP International certified antimicrobial treated cementitious urethane terrazzo system.



### Polygiene®:

Contains a silver ion antimicrobial additive to protect the surface.



### Decorative:

Available in a wide-range of decorative patterns and finishes.



### Temperature Resistant:

Resistant to temperatures of up to 250°F and suitable for steam cleaning.



### Abrasion Resistant:

Excellent wear resistance against foot and rubber-wheeled traffic.



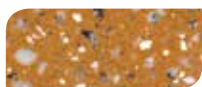
### Easily Cleaned:

Minimal surface joints ensure the floor is easy to clean and sanitize.

## Standard Colors:



Cream



Mustard



Dark Green



Ochre



Mid Gray



Tile Red

The applied colors may differ from the examples shown.  
General wear on Sky Blue and Safety Yellow may be more visible.  
For a full color chart and samples, contact your local Flowcrete office.

### COVERAGES RATES: (52.5 LB UNIT)

17 sq ft/unit at 1/4"

### COMPRESSIVE STRENGTH:

ASTM C 579 8,000 psi

### TENSILE STRENGTH:

ASTM C 307 1,200 psi

### COEFFICIENT OF THERMAL EXPANSION:

ASTM C 531 1.57 x 10<sup>-5</sup>in/in/°F

### FLEXURAL STRENGTH:

ASTM C 580 3,000 psi

### ABRASION RESISTANCE:

ASTM D 4060  
H22 Wheel, 1000 cycles 0.2g loss

### ADHESION:

ASTM D 4541 400 psi  
(100% concrete failure)

### COEFFICIENT OF FRICTION:

ASTM D 2047 Exceeds ADA  
recommendations

### TEMPERATURE RESISTANCE:

Continuous Exposure: 220°F

Intermittent Spills: 250°F

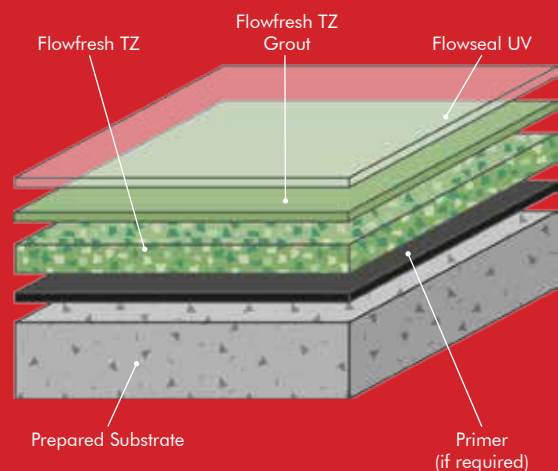
VOC: 5 g/l

SPEED OF CURE: 50°F 70°F 90°F

Light Traffic 12-14 hrs 6-8 hrs 3-5 hrs

Full Traffic 24-36 hrs 12-16 hrs 8-10 hrs

Full Chemical Cure 5-7 days 3-5 days 1-2 days



## Products Included In This System

<b>Unit:</b>	52.5 lb (including color pack)
<b>Primer:</b> (if required)	Flowprime at 200 sq ft/gal or Flowfresh FC at 150 - 200 sq ft/unit
<b>Mortar:</b>	Flowfresh TZ 17 sq ft/unit at 1/4"
<b>Grout:</b>	Flowfresh TZ Grout at 300 sq ft/unit
<b>Sealer:</b>	Flowseal UV at 320 sq ft/gal

## Installation

Installation should be carried out by a Flowcrete STAR or preferred contractor with a documented quality assurance note. Obtain details of our preferred contractor network from our customer service team or by enquiring through our website. Detailed application instructions are also available upon request.

## Substrate Requirements

Concrete or screed substrate should have a minimum of 3,000 psi compressive strength, free from laitance, dust and other contamination. The substrate should be dry to ASTM requirements and free from excessive moisture vapor transmission.

## Primer

Under certain conditions, out-gassing of the concrete may cause surface defects in the finished Flowfresh topping and priming of the concrete surface may be required. Install a test patch in the area of concrete to determine if priming is necessary.

## Polygiene®

All Flowfresh systems include a built in high performance antimicrobial, Polygiene®. This silver-ion based additive inhibits the growth of bacteria and molds and guards against surface degradation and odors caused by these microorganisms. Detailed antimicrobial information and test results are available upon request.

## Color Stability

Flowfresh is not color fast and may change color over time (exhibits a yellowing effect). Color change depends on the UV light and heat levels present as such the rate of change cannot be predicted. This is more noticeable in light colors and grays, but does not compromise the product's chemical resistance or physical characteristics. Special customized colors and designs can be produced to special order.

## Technical Profile

The figures and test results shown overleaf are typical properties achieved in laboratory tests at 75°F and at 50% Relative Humidity.

## Environmental Health & Safety

The finished system is assessed as non-hazardous to health and the environment. Flowfresh systems are USDA/FDA compliant & HACCP International certified. The long service life and seamless surface reduce the need for repairs and maintenance. Environmental and health considerations are controlled during manufacture and application of the products by Flowcrete Americas' staff and fully trained application teams.

## Aftercare, Cleaning & Maintenance

After the Flowfresh floor has been put into service, normal plant cleaning procedures may be employed. There are no effective restrictions on the method of cleaning employed. The method of cleaning should match the soil conditions and degree of sanitation required. Flowfresh flooring materials will withstand the daily use of harsh rigorous cleaning with disinfectants and detergents. Certain Flowfresh products will withstand routine cleaning by hot water wash downs up to 250°F and direct application of water-steam mix. Consult a technical representative for advice.

## Warranty

Flowcrete Americas' products are guaranteed against defective materials and manufacture and are sold subject to our standard 'Warranty, Terms and Conditions of Sale', copies of which can be obtained on request. Warranty does not cover suitability, fit for purpose or any consequential or related damages. Please review warranty in detail before installing the products.

## Disclaimer

Any recommendation or suggestion relating to the use of products manufactured by Flowcrete Americas, whether in its technical literature or in response to a specific inquiry, is based upon data believed to be reliable, however the products and information are intended for use by applicators having requisite skill and know-how in the industry and therefore it is for the applicator to satisfy itself of the suitability of the products for its own particular use and it shall be deemed that the applicator has done so at its sole discretion and risk.

[11/23/15]

