



## Mondéco TZ (1/4")

A trowel-applied, granite filled antimicrobial treated cementitious urethane terrazzo flooring system.



### Polygiene®:

Contains a silver ion antimicrobial additive to protect the surface.



### Decorative:

Available in a wide-range of decorative colors, patterns and aggregate blends.



### Temperature Resistant:

Resistant to temperatures of up to 250°F and suitable for steam cleaning.



### Chemical Resistant:

Protects against acids, alkalis, sanitizers, chemical solvents, salt and sugar solutions.



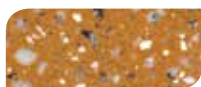
### Lifecycle Cost Efficiencies:

Offers significant lifecycle cost savings compared to tile or vinyl floor finishes.

### Standard Colors:



Cream



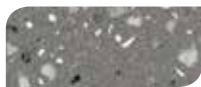
Mustard



Dark Green



Ochre



Mid Gray



Tile Red

### COVERAGES RATES: (52.5 LB UNIT)

14 sq ft/unit at 3/8"

### COMPRESSIVE STRENGTH:

ASTM C 579 8,000 psi

### TENSILE STRENGTH:

ASTM C 307 1,200 psi

### FLEXURAL STRENGTH:

ASTM C 580 3,000 psi

### ABRASION RESISTANCE:

ASTM D 4060  
H22 Wheel, 1000 cycles 0.2g loss

### SLIP RESISTANCE:

BS 7976-2 Dry: 80

### ABRASION RESISTANCE:

BS 8204-2 Class AR2- Medium duty industrial and commercial

### WEAR RESISTANCE:

EN 13892-4 Max. wear depth < 50 µm

### IMPACT RESISTANCE:

EN ISO 6272 175 inch pounds

### BOND STRENGTH:

ASTM D 4541 >220 psi

### TEMPERATURE RESISTANCE:

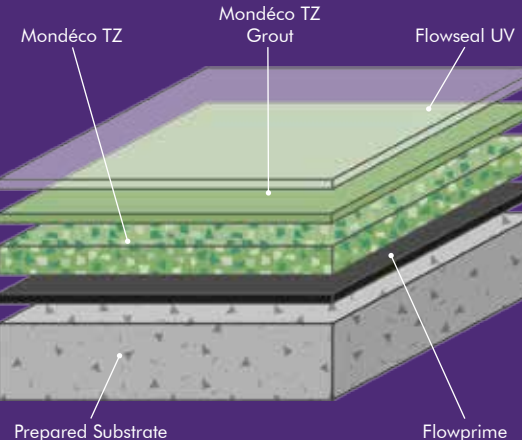
Continuous Exposure: 220°F

Intermittent Spills: 250°F

VOC: 10 g/l

### SPEED OF CURE:

	50°F	70°F	90°F
Light Traffic	24 hrs	16 hrs	10 hrs
Full Traffic	72 hrs	48 hrs	36 hrs
Full Chemical Cure	12 days	7 days	4 days



The applied colors may differ from the examples shown. For a full color chart and samples, contact your local Flowcrete office.

## Products Included In This System

Primer:	Flowprime at 175 - 225 sq ft/gal
Topping:	Mondéco TZ at 14 sq ft/unit
Grout:	Mondéco TZ Grout at 300 sq ft/quart
Sealers:	Flowseal UV at 320 sq ft / gal

System applied at 3/8" ground to 1/4"

Various grades of aluminum oxide can be incorporated to provide a textured finish.

Coverages listed are theoretical, actual coverages may vary based on substrate and site variations.

## Installation

Installation should be carried out by a Flowcrete STAR or preferred contractor with a documented quality assurance note. Obtain details of our preferred contractor network from our customer service team or by enquiring through our website. Detailed application instructions are also available upon request.

## Substrate Requirements

Concrete or screed substrate should have a minimum of 3,000 psi compressive strength, free from laitance, dust and other contamination. The substrate should be dry to ASTM requirements and free from excessive moisture vapor transmission.

## Technical Profile

The figures and test results shown overleaf are typical properties achieved in laboratory tests at 75°F and at 50% Relative Humidity.

## Floor Design Service

Special corporate designs and colors can be produced to special order.

## Environmental Health & Safety

The finished system is assessed as non-hazardous to health and the environment. The long service life and seamless surface reduce the need for repairs and maintenance. Environmental and health considerations are controlled during manufacture and application of the products by Flowcrete Americas' staff and fully trained application teams.

## Aftercare, Cleaning & Maintenance

Clean regularly using a single or double headed rotary scrubber / drier with a mildly alkaline detergent

## Warranty

Flowcrete Americas' products are guaranteed against defective materials and manufacture and are sold subject to our standard 'Warranty, Terms and Conditions of Sale', copies of which can be obtained on request. Warranty does not cover suitability, fit for purpose or any consequential or related damages. Please review warranty in detail before installing the products.

## Disclaimer

Any recommendation or suggestion relating to the use of products manufactured by Flowcrete Americas, whether in its technical literature or in response to a specific inquiry, is based upon data believed to be reliable, however the products and information are intended for use by applicators having requisite skill and know-how in the industry and therefore it is for the applicator to satisfy itself of the suitability of the products for its own particular use and it shall be deemed that the applicator has done so at its sole discretion and risk.

[09/03/15]

